

# Eclipse BoostPak

## Packaged Gas Booster Systems

Series MS  
Version 2

### Medium Flow Simplex

Parameter	Specification							
	MS3316	MS3314	MS3412	MS4414	MS4617	MS4619	MS4623	MS4628
Assembly Number	10024850	10024851	10024852	10024853	10024854	10024855	10024856	10024857
Booster	HBLC3316- $\frac{3}{4}$	HB3314- $\frac{1}{2}$	HB3412- $\frac{1}{2}$	HB4414-1	HB4617-1	HB4619-2	HB4623-5	HB4628-5
Minimum Flow (cfh) <sup>a</sup>	150	1060	2320	4080	7700	5900	22,000	9700
Maximum Flow (cfh) <sup>a</sup>	5500	5300	11,600	20,400	23,000	17,800	33,000	14,600
Pressure Boost <sup>a</sup>	10	9	7	7	13	18	26	34
Turndown	37:1	5:1	5:1	5:1	3:1	3:1	1.5:1	1.5:1
Primary Voltage	b,c,d,e	b,c,d,e	b,c,d,e	c,d	c,d	c,d	c,d	c,d
Motor Horsepower	$\frac{3}{4}$	$\frac{1}{2}$	$\frac{1}{2}$	1	1	2	5	5
Approximate Weight (Lbs.) <sup>f</sup>	580	530	550	620	780	880	1,100	1,250

- Notes: a Ratings are nominal, in CFH of natural gas, at standard conditions and depend on customer interface piping.  
b 115/230 VAC, 1 $\phi$ , 60hz  
c 230/460 VAC, 3 $\phi$ , 60hz  
d 208 VAC, 3 $\phi$ , 60hz  
e 208 VAC, 1 $\phi$ , 60hz  
f weight is approximate  
NEMA 12 rating; NEMA 7 rating option available (footprint increases with this option)

### Dimensional Information [mm (in)]

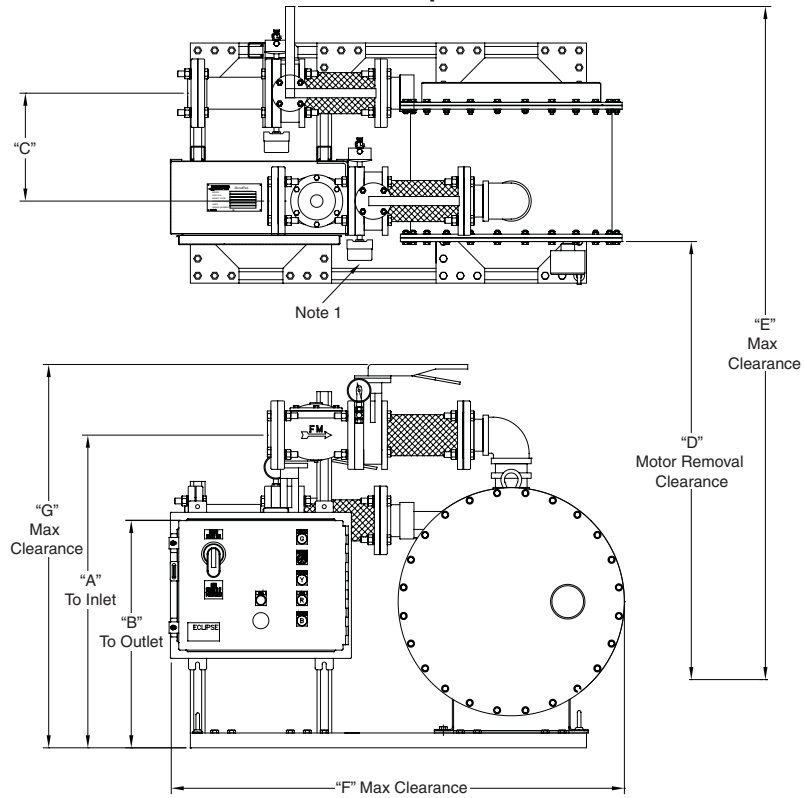
BoostPak	Flange sizes (150#)		Connection Data		
	Inlet	Outlet	A	B	C
MS3316	3	3	822 (32.3)	626 (24.6)	299 (11.8)
MS3314	3	3	402 (15.8)	613 (24.1)	167 (6.6)
MS3412	4	3	364 (14.3)	553 (21.8)	224 (8.8)
MS4414	4	4	402 (15.8)	613 (24.1)	203 (8)
MS4617	6	4	435 (17.1)	684 (26.9)	307 (12.1)
MS4619	6	4	524 (20.6)	822 (32.4)	308 (12.1)
MS4623	6	4	549 (21.6)	895 (35.3)	322 (12.7)
MS4628	6	4	625 (24.6)	1054 (41.5)	316 (12.4)

BoostPak	Maximum Envelope			
	D	E	F	G
MS3316	1219 (48)	1927 (75.9)	1538 (60.6)	1026 (40.4)
MS3314	737 (29)	1603 (63.1)	1356 (53.4)	818 (32.2)
MS3412	762 (30)	1700 (66.9)	1526 (60.1)	758 (29.8)
MS4414	762 (30)	1664 (65.5)	1531 (60.3)	837 (32.9)
MS4617	762 (30)	1773 (69.8)	1836 (72.3)	907 (35.7)
MS4619	711 (28)	1683 (66.3)	1890 (74.4)	1046 (41.2)
MS4623	889 (35)	2027 (79.8)	1946 (76.6)	1119 (44)
MS4628	965 (38)	2162 (85.1)	2027 (79.8)	1277 (50.3)

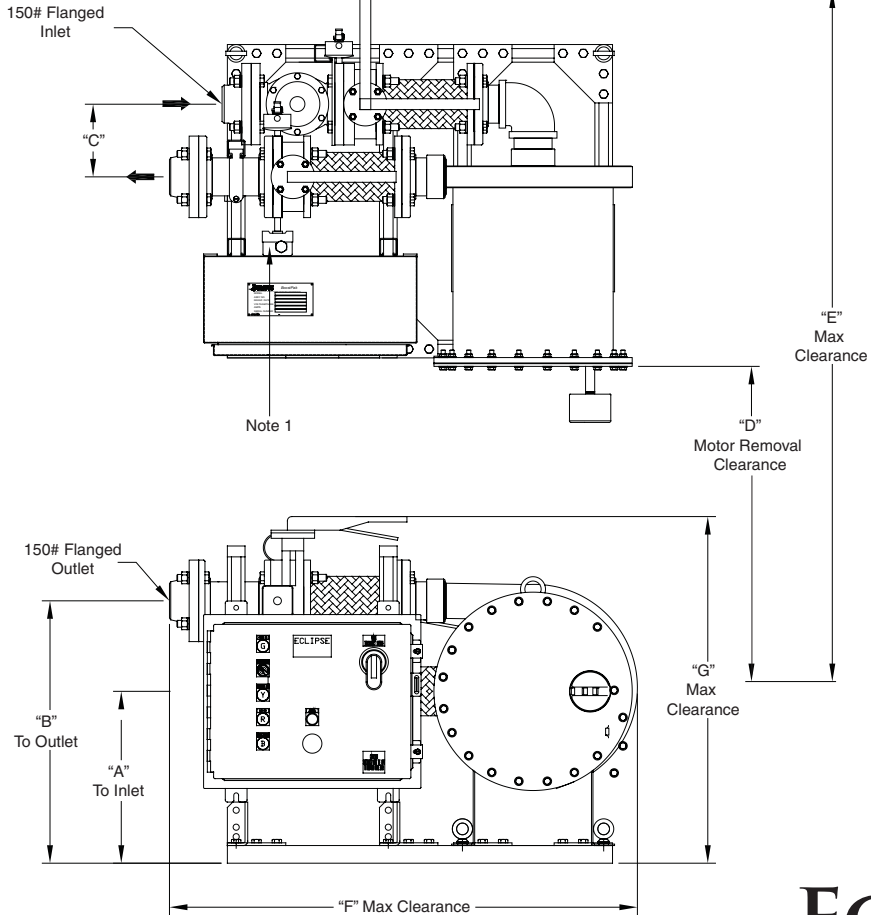
Note: all dimensions are approximate.

## Dimensions Medium Flow Simplex

**MS3316**



**MS3314 – MS4628**



*Note 1* Pressure Switch Kit location when factory mounted.

*Note 2* When Pressure Switch Kit is supplied loose, it shall be installed in accordance with local codes.

**ECLIPSE<sup>®</sup>**  
Innovative Thermal Solutions



**Offered By:**

Power Equipment Company  
2011 Williamsburg Road  
Richmond, Virginia 23231  
Phone (804) 236-3800  
Fax (804) 236-3882

---

[www.peconet.com](http://www.peconet.com)